



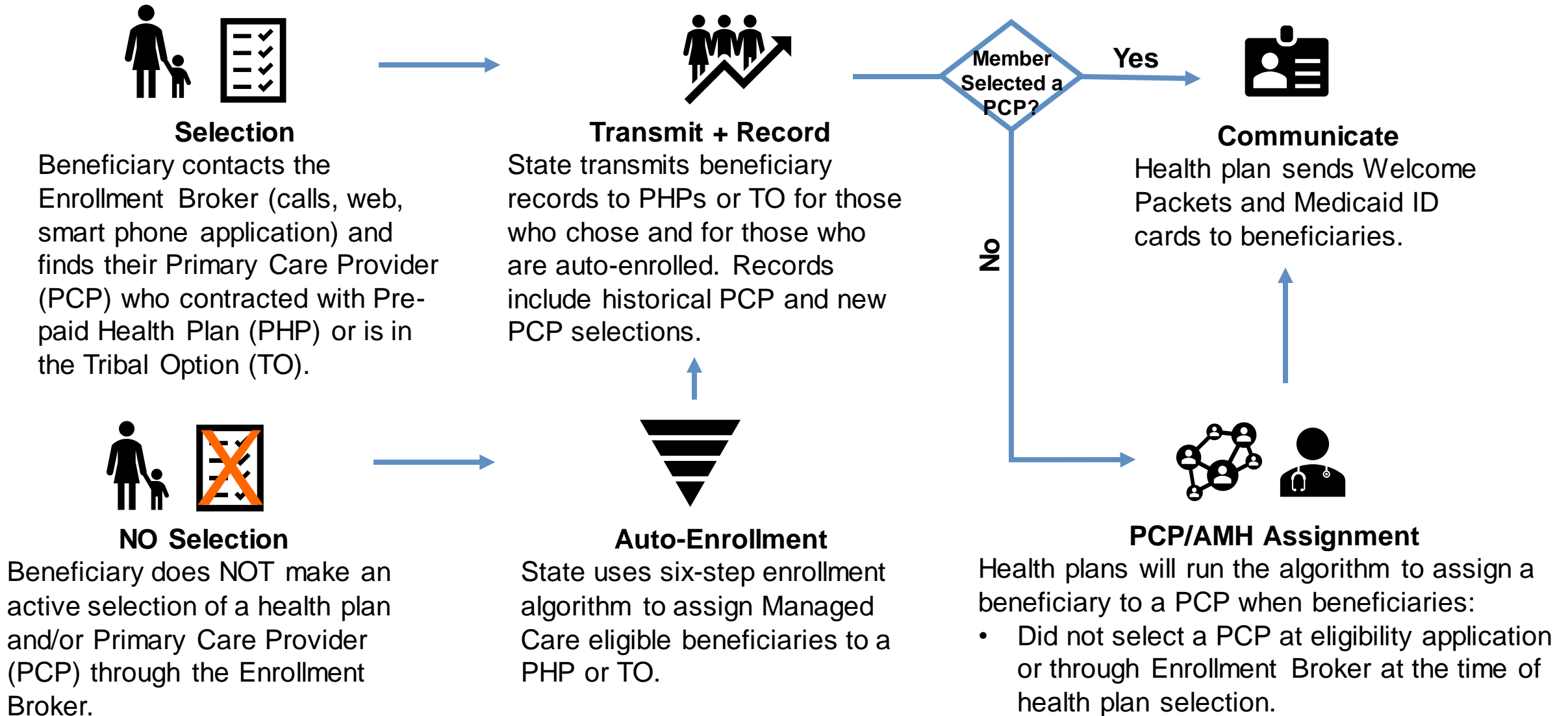
Auto Enrollment Scenarios

December 30, 2020

Contents

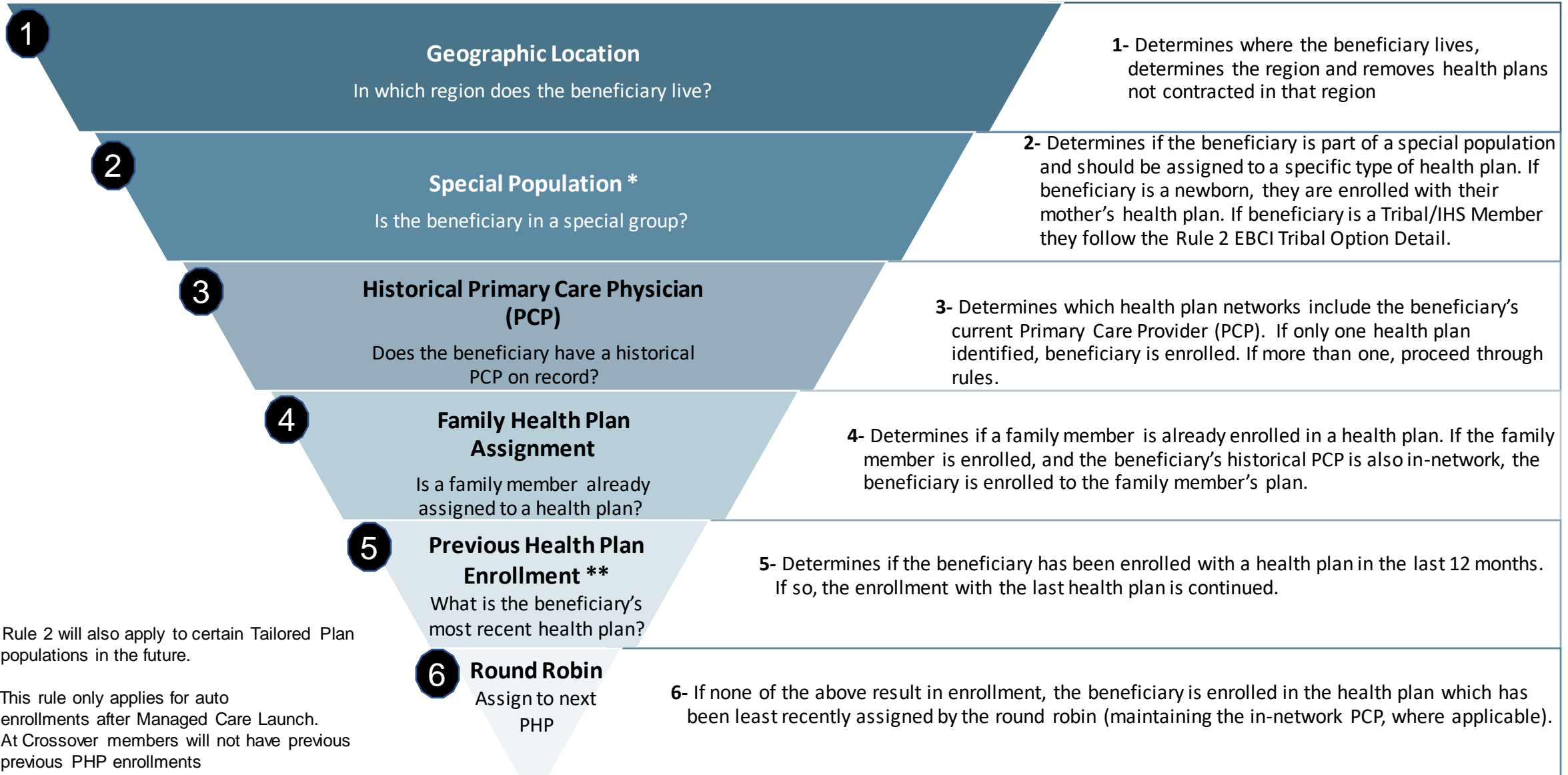
Page	Topic
3	Member Enrollment Diagram
4	Auto-Enrollment: Algorithm
5	Auto-Enrollment: Rule 2 EBCI Tribal Option Detail
6	Auto-Enrollment Example Scenarios during Crossover
7	Individual Auto-Enrollment: with PCP in-network
8	Individual Auto-Enrollment: with PCP not in-network for any PHP
10	Mother, Son Auto-Enrolled: Enrolled in same PHP
12	Mother, Son Auto-Enrolled: Enrolled in different PHP
15	Tribe/IHS Individual Auto-Enrollment: Dual Eligible enrolled in Tribal Option
16	Tribe/IHS Individual Auto-Enrollment: Tribal Exempt Status enrolled in Tribal Option
17	Tribe/IHS Individual Auto-Enrollment: Tribal Exempt Status enrolled in Medicaid Direct

Member Enrollment Diagram



Health Plan Auto-Enrollment: Algorithm

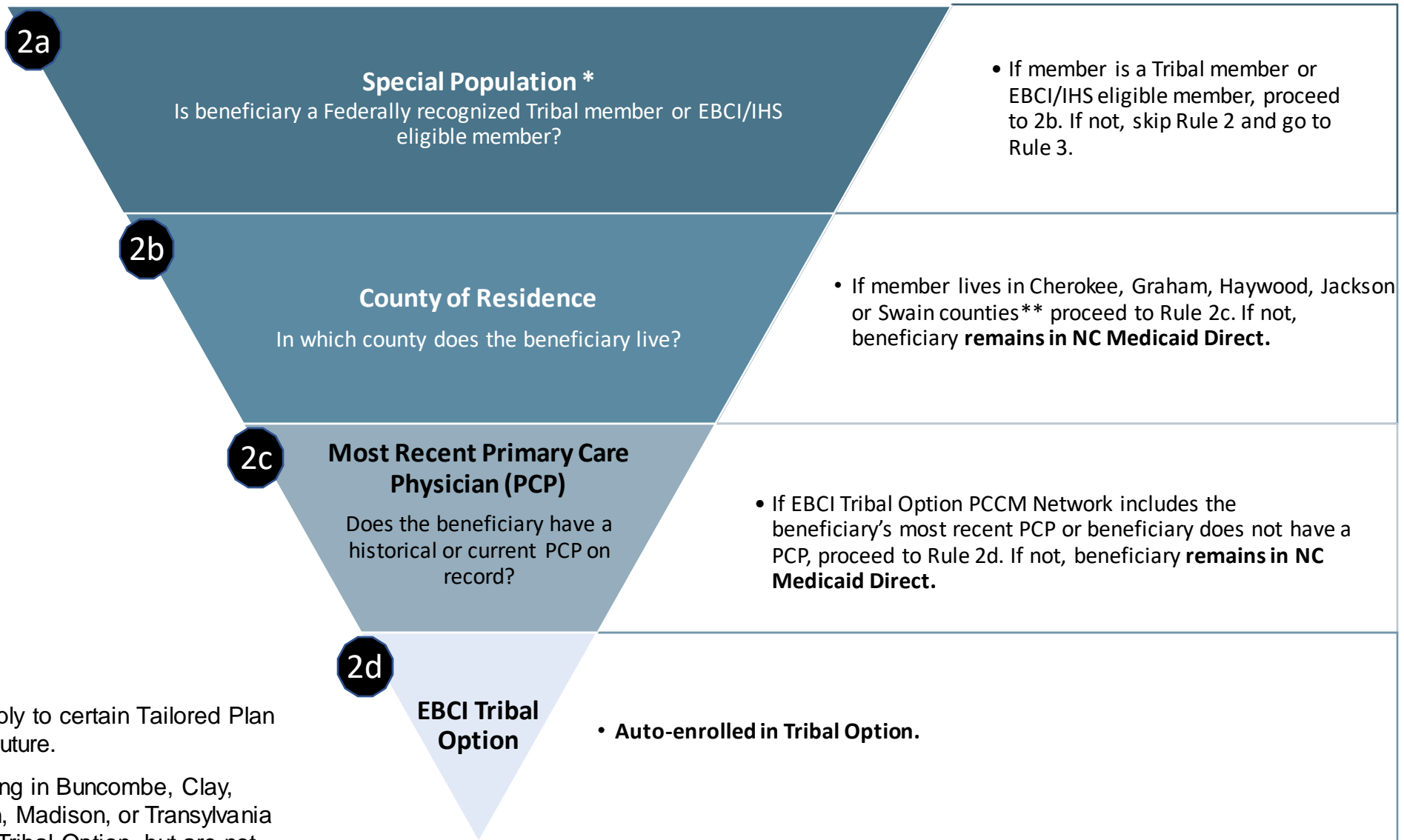
If a member does not choose a PHP or the EBCI Tribal Option, they are auto-enrolled according to the funnel below.



* Rule 2 will also apply to certain Tailored Plan populations in the future.

** This rule only applies for auto enrollments after Managed Care Launch. At Crossover members will not have previous previous PHP enrollments

Health Plan Auto-Enrollment: Rule 2 EBCI Tribal Option Detail



* Rule 2 will also apply to certain Tailored Plan populations in the future.

** Tribal members living in Buncombe, Clay, Henderson, Macon, Madison, or Transylvania have the option of Tribal Option, but are not auto-enrolled to it.



Auto-Enrollment Example Scenarios 1-2: Individual Auto-Enrolled



Scenario 1: Individual Beneficiary Auto-Enrolled with existing PCP

Barbara Smith is a current Medicaid beneficiary who is part of the mandatory Standard Plan population. She lives in Region 4 and Oak Heath Practice has been her PCP for five years. Oak Health Practice contracted with health plans A and B. While Barbara received communications encouraging plan selection with NC Enrollment Broker, she did not select a health plan before Open Enrollment closed. NC Medicaid enrolls her to a PHP using the auto-enrollment process. Rules in *italics* apply.

1 Geography

Barbara lives in Region 4. All health plans are available in Region 4.

- PHP A ✓
- PHP B ✓
- PHP C ✓
- PHP D ✓
- PHP E ✓

2 Special Population

Barbara is not a part of a Special Population (like newborn). All health plans remain available for Barbara.

- PHP A ✓
- PHP B ✓
- PHP C ✓
- PHP D ✓
- PHP E ✓

3 Primary Care Physician

Barbara's PCP, Oak Health Practice, is in-network with health plans A and B. Other health plans are removed for Barbara.

- PHP A ✓
- PHP B ✓
- ~~PHP C~~
- ~~PHP D~~
- ~~PHP E~~

4 Family Assignment

Barbara is an individual and does not have associated family. Barbara's health plans Options remain A & B.

- PHP A ✓
- PHP B ✓
- ~~PHP C~~
- ~~PHP D~~
- ~~PHP E~~

5 Previous Enrollment

Barbara does not have previous enrollment in a health plan. Barbara's health plan Options remain A & B.

- PHP A ✓
- PHP B ✓
- ~~PHP C~~
- ~~PHP D~~
- ~~PHP E~~

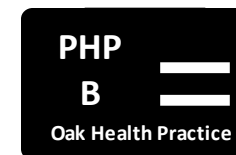
6 Round Robin

The auto-enrollment process knows the last plan used for enrollment between A and B, was A. The next available plan is B. Barbara is enrolled with health plan B.

- ~~PHP A~~
- PHP B ✓
- ~~PHP C~~
- ~~PHP D~~
- ~~PHP E~~

😊 Barbara's Enrolled!

Barbara is enrolled in health plan B. Her enrollment and PCP information is transmitted to health plan B. Barbara will be assigned to her PCP, Oak Health Practice, by health plan B. Barbara will receive her Welcome Packet and new Medicaid ID Card.





Scenario 2: Individual Beneficiary Auto-Enrolled without existing PCP

Rita Turner is a current Medicaid beneficiary who is part of the mandatory Standard Plan population. She lives in Region 4 and has had Salus Health Practice as a PCP for 10 years. Salus Health Practice has not contracted with any health plans. While Rita received communications encouraging plan selection using the NC Enrollment Broker, she did not select a health plan. Open Enrollment ended. NC Medicaid enrolls Rita to a PHP using the auto-enrollment process. Rules in *italics* apply.

1 Geography

Rita lives in Region 6. All health plans except PHP C are available in Region 6.

- PHP A ✓
- PHP B ✓
- ~~PHP C~~
- PHP D ✓
- PHP E ✓

2 Special Population

Rita is not a part of a Special Population (like newborn). All health plans except PHP C remain available for Rita.

- PHP A ✓
- PHP B ✓
- ~~PHP C~~
- PHP D ✓
- PHP E ✓

3 Primary Care Physician

Rita's PCP, Salus Health Practice, is not in-network with any health plans. No additional health plans are removed for Rita.

- PHP A ✓
- PHP B ✓
- ~~PHP C~~
- PHP D ✓
- PHP E ✓

4 Family Assignment

Rita is an individual and does not have associated family. Rita's health plans Options remain A, B, D and E.

- PHP A ✓
- PHP B ✓
- ~~PHP C~~
- PHP D ✓
- PHP E ✓

5 Previous Enrollment

Rita does not have previous enrollment in a health plan. Rita's health plans Options remain A, B, D and E.

- PHP A ✓
- PHP B ✓
- ~~PHP C~~
- PHP D ✓
- PHP E ✓

6 Round Robin

The auto-enrollment process knows among plans A, B, D and E; Plan E was least recently assigned through auto-enrollment and is the next available plan. Rita is enrolled with health plan E.

- ~~PHP A~~
- ~~PHP B~~
- ~~PHP C~~
- ~~PHP D~~
- PHP E ✓

😊 Barbara's Enrolled!

Rita is enrolled in health plan E. Her enrollment information is transmitted to health plan E. Rita will be assigned to a new PCP in-network for health plan E. Rita will receive her Welcome Packet and new Medicaid ID Card.





Auto-Enrollment Example Scenarios 3-4: Mother, Son Auto-Enrolled



Scenario 3A: Mother, Son Auto-Enrolled – Simon Baker

Michelle Baker and her child, Simon (10), are mandatory Standard Plan Medicaid beneficiaries living in Region 3. At eligibility application, Michelle selected Mountain Heath Practice as her Primary Care Provider (PCP) and Children’s Pediatrics for Simon. Mountain Health Practice has contracted with all health plans, while Children’s Pediatrics has contracted with only health plans A and C. While Michelle received communications encouraging plan selection using the NC Enrollment Broker, she did not make health plan selections for her family prior to the end of Open Enrollment. NC Medicaid will enroll Michelle and Simon to a health plan using the auto-enrollment process. When determining enrollment, NC Medicaid processes by age, starting with the youngest person. Rules in *italics> apply.*

1 Geography

Simon lives in Region 3. All health plans are available in Region 3.

- PHP A ✓
- PHP B ✓
- PHP C ✓
- PHP D ✓
- PHP E ✓

2 Special Population

Simon is not part of a Special Population (like newborn). All health plans remain available.

- PHP A ✓
- PHP B ✓
- PHP C ✓
- PHP D ✓
- PHP E ✓

3 Primary Care Physician

Simon’s PCP, Children’s Pediatrics, is in-network with health plans A and C.

- PHP A ✓
- ~~PHP B~~
- PHP C ✓
- ~~PHP D~~
- ~~PHP E~~

4 Family Assignment

Simon is the youngest in his family, Michelle has not been enrolled with a PHP. Simon’s options remain PHP A and PHP C.

- PHP A ✓
- ~~PHP B~~
- PHP C ✓
- ~~PHP D~~
- ~~PHP E~~

5 Previous Enrollment

Simon does not have previous enrollment in a health plan. Simon’s health plan options remain A and C.

- PHP A ✓
- ~~PHP B~~
- PHP C ✓
- ~~PHP D~~
- ~~PHP E~~

6 Round Robin

The auto-enrollment process knows the last plan used for enrollment between A and C, was C. The next available plan is A. Simon is enrolled to health plan A.

- PHP A ✓
- ~~PHP B~~
- ~~PHP C~~
- ~~PHP D~~
- ~~PHP E~~

😊 Simon’s Enrolled!

Simon is enrolled to health plan A. Simon’s enrollment and PCP information is transmitted to health plan A. Simon will be assigned to his PCP, Children’s Pediatrics, by health plan A. Michelle will receive a Welcome Packet and new Medicaid ID Card for Simon.





Scenario 3B: Mother, Son Auto-Enrolled – Michelle Baker

Michelle Baker and her child, Simon 10, are mandatory Standard Plan Medicaid beneficiaries living in Region 3. At eligibility application, Michelle selected Mountain Heath Practice as her Primary Care Provider (PCP) and Children’s Pediatrics for Simon. Mountain Health Practice has contracted with all health plans, while Children’s Pediatrics has only Contracted with only health plans A and C. While Michelle received communications encouraging plan selection using the NC Enrollment Broker, she did not make health plan selections for her family prior to the end of Open Enrollment. The Department will enroll Michelle and Simon to a health plan using the auto-enrollment process. When determining enrollment, the Department processes by age, starting with the youngest person. Since Simon was enrolled, Michelle will be enrolled next. Rules in *italics* apply.

1 Geography

Michelle lives in Region 3. All health plans are available in Region 3.

- PHP A ✓
- PHP B ✓
- PHP C ✓
- PHP D ✓
- PHP E ✓

2 Special Population

Michelle is not part of a Special Population (like newborn). All health plans remain available.

- PHP A ✓
- PHP B ✓
- PHP C ✓
- PHP D ✓
- PHP E ✓

3 Primary Care Physician

Michelle’s PCP, Mountain Health Practice, is in-network with all health plans.

- PHP A ✓
- PHP B ✓
- PHP C ✓
- PHP D ✓
- PHP E ✓

4 Family Assignment

Michelle’s son, Simon, has been enrolled in health plan A. Michelle also will be enrolled to health plan A since Mountain Health Practice is in-network and Simon is already enrolled.

- PHP A ✓
- ~~PHP B~~
- ~~PHP C~~
- ~~PHP D~~
- ~~PHP E~~

5 Previous Enrollment

Michelle was enrolled to health plan A based on Family Assignment. Previous enrollment does not apply.

- PHP A ✓
- ~~PHP B~~
- ~~PHP C~~
- ~~PHP D~~
- ~~PHP E~~

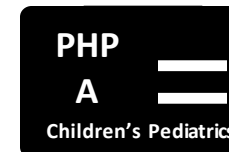
6 Round Robin

Michelle was enrolled with health plan A based on Family Assignment. Round robin does not apply.

- PHP A ✓
- ~~PHP B~~
- ~~PHP C~~
- ~~PHP D~~
- ~~PHP E~~

😊 Michelle’s Enrolled!

Michelle is enrolled to health plan A. Michelle’s enrollment and PCP information is transmitted to health plan A. Michelle will be assigned to her PCP, Mountain Pediatrics, by health plan A. Michelle will receive a Welcome Packet and new Medicaid ID Card.





Scenario 4A: Family Auto-Enrolled – Alex Cortez

Freda Cortez and her child, Alex (3), are new mandatory Standard Plan Medicaid beneficiaries living in Region 5. At eligibility application, Freda selected Women’s Health Practice as her Primary Care Provider (PCP) and Ocean Pediatrics for Alex. Women’s Health Practice contracted with all health plans except C, while Ocean Pediatrics only contracted with C. While Freda received communications encouraging plan selection with the NC Enrollment Broker, she did not make health plan selections for Alex before Open Enrollment ended. NC Medicaid will enroll Freda and family to a health plan using the auto-enrollment process. When determining enrollment, NC Medicaid processes by age, starting with the youngest person. Rules in *italics* apply.

1 Geography

Alex lives in Region 5. All health plan are available in Region 5.

- PHP A ✓
- PHP B ✓
- PHP C ✓
- PHP D ✓
- PHP E ✓

2 Special Population

Alex is not part of a Special Population (like Newborn). All health plan remain available.

- PHP A ✓
- PHP B ✓
- PHP C ✓
- PHP D ✓
- PHP E ✓

3 Primary Care Physician

Alex’s PCP, Ocean Pediatrics, is in-network with health plan C. Alex is enrolled with health plan C.

- ~~PHP A~~
- ~~PHP B~~
- PHP C ✓
- ~~PHP D~~
- ~~PHP E~~

4 Family Assignment

Alex is the youngest in her family, Freda has not been enrolled with a health plan. Alex’s option remains PHP C.

- ~~PHP A~~
- ~~PHP B~~
- PHP C ✓
- ~~PHP D~~
- ~~PHP E~~

5 Previous Enrollment

Alex was enrolled to health plan C. Previous enrollment does not apply.

- ~~PHP A~~
- ~~PHP B~~
- PHP C ✓
- ~~PHP D~~
- ~~PHP E~~

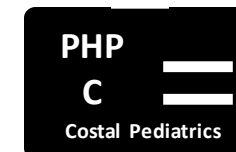
6 Round Robin

Alex was enrolled with health plan C. Round robin does not apply.

- ~~PHP A~~
- ~~PHP B~~
- PHP C ✓
- ~~PHP D~~
- ~~PHP E~~

😊 Alex’s Enrolled!

Alex is enrolled to health plan C. Alex’s enrollment and PCP information is transmitted to health plan C. Alex will be assigned to her PCP, Ocean Pediatrics, by health plan C. Freda will receive a Welcome Packet and new Medicaid ID Card for Alex.





Scenario 4B: Family Auto-Enrolled – Freda Cortez

Freda Cortez and her child, Alex (3), are new mandatory Standard Plan Medicaid beneficiaries living in Region 5. At eligibility application, Freda selected Women’s Health Practice as her Primary Care Provider (PCP) and Ocean Pediatrics for Alex. Women’s Health Practice has contracted with all health plans except C, while Ocean Pediatrics has only contracted with C. While Freda received communications encouraging plan selection using the NC Enrollment Broker, she did not make health plan selections for Alex prior to the end of Open Enrollment. The Department will enroll Freda and family to a health plan using the auto-enrollment process. When determining enrollment, the Department processes by age, starting with the youngest person. Since Alex was already enrolled, Freda will be enrolled next. Rules in *italics* apply.

1 Geography

Freda lives in Region 5. All health plans are available in Region 5.

- PHP A ✓
- PHP B ✓
- PHP C ✓
- PHP D ✓
- PHP E ✓

2 Special Population

Freda is not part of a Special Population (like newborn). All health plans remain available.

- PHP A ✓
- PHP B ✓
- PHP C ✓
- PHP D ✓
- PHP E ✓

3 Primary Care Physician

Freda’s PCP, Women’s Health Practice, is in-network with all Health Plans except C. Freda’s health plan options remain A, B, D, and E.

- PHP A ✓
- PHP B ✓
- ~~PHP C~~
- PHP D ✓
- PHP E ✓

4 Family Assignment

Freda’s child Alex has been enrolled with health plan C, but Women’s Health Practice is not in-network with C.

- PHP A ✓
- PHP B ✓
- ~~PHP C~~
- PHP D ✓
- PHP E ✓

5 Previous Enrollment

Freda does not have previous enrollment in a health plan. Freda’s health plan options remain A, B, D, and E.

- PHP A ✓
- PHP B ✓
- ~~PHP C~~
- PHP D ✓
- PHP E ✓

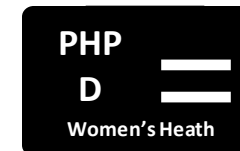
6 Round Robin

The auto-enrollment process knows the last plan used for enrollment between A, B, D, and E, was B. The next available plan is D. Freda is enrolled with health plan D.

- ~~PHP A~~
- ~~PHP B~~
- ~~PHP C~~
- PHP D ✓
- ~~PHP E~~

😊 Freda’s Enrolled!

Freda is enrolled in health plan D. Freda’s enrollment and PCP information is transmitted to health plan D. Freda will be assigned to her PCP, Women’s Health Practice, by health plan D. Freda will receive a Welcome Packet and new Medicaid ID Card for herself.





Auto-Enrollment Example Scenarios 5-7: Tribe/IHS Individual Auto-Enrolled



Scenario 5: Tribe/IHS Individual Beneficiary Auto-Enrolled

Tricia Walker is an EBCI/HIS-eligible member and dually eligible Medicaid beneficiary (Tribal – Excluded population). She lives in Region 1 in Cherokee county and has had Blue Ridge Health Practice as a PCP for five years. Blue Ridge has contracted with health plans A and B and is a part of Cherokee Indian Hospital Association (CIHA). The Department enrolls Tricia to the EBCI Tribal Option using the auto-enrollment process. Rules in *italics* apply.

1 Geography

Tricia lives in Region 1. All health plans except PHP C are available in Region 1.

- EBCI Tribal Option ✓
- Medicaid Direct ✓
- PHP A ✓
- PHP B ✓
- ~~PHP C~~
- PHP D ✓
- PHP E ✓

2 Special Population

Tricia is not a federally recognized Tribal member but is ECBI/IHS eligible and a dual eligible. She is excluded from Standard Plans and enters the Rule 2 EBCI Tribal Option Detail. EBCI Tribal Option and NC Medicaid Direct remain available.

- EBCI Tribal Option ✓
- Medicaid Direct ✓
- ~~PHP A~~
- ~~PHP B~~
- ~~PHP C~~
- ~~PHP D~~
- ~~PHP E~~

2b County of Residence

Tricia lives in Cherokee County, one of five counties where the EBCI Tribal Option network is available. EBCI Tribal Option and NC Medicaid Direct remain available.

- EBCI Tribal Option ✓
- Medicaid Direct ✓
- ~~PHP A~~
- ~~PHP B~~
- ~~PHP C~~
- ~~PHP D~~
- ~~PHP E~~

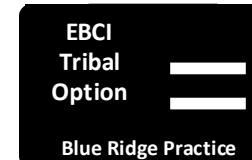
2c Primary Care Physician

Tricia's PCP, Blue Ridge Health Practice, is part of CIHA and within the EBCI Tribal Option Network. She is enrolled to EBCI Tribal Option.

- EBCI Tribal Option ✓
- ~~Medicaid Direct~~
- ~~PHP A~~
- ~~PHP B~~
- ~~PHP C~~
- ~~PHP D~~
- ~~PHP E~~

😊 Tricia's Enrolled!

Tricia is enrolled in EBCI Tribal Option. Her enrollment and PCP information is transmitted to EBCI Tribal Option. Tricia will be assigned to her PCP, Blue Ridge Health Practice, by EBCI Tribal Option. Tricia will receive her Welcome Packet and new Medicaid ID Card.





Scenario 6: Tribe/IHS Individual Beneficiary Auto-Enrolled

Perry Singer is a federally recognized Tribal member who is exempt from Standard Plan. She lives in Region 1 and does not have a PCP. While Perry received a letter communicating her options to enroll in EBCI Tribal Option, NC Medicaid Direct or a Prepaid Health Plan, she did not select a health plan prior to the end of Open Enrollment. NC Medicaid enrolls Perry to EBCI Tribal Option using the auto-enrollment process. Rules in *italics* apply.

1 Geography

Perry lives in Region 1. All health plans except PHP C are available in Region 1.

- EBCI Tribal Option ✓
- Medicaid Direct ✓
- PHP A ✓
- PHP B ✓
- ~~PHP C~~
- PHP D ✓
- PHP E ✓

2 Special Population

Perry is a federally recognized Tribal member and did not select a PHP during Open Enrollment. All PHPs are removed. EBCI Tribal Option and NC Medicaid Direct are options.

- EBCI Tribal Option ✓
- Medicaid Direct ✓
- ~~PHP A~~
- ~~PHP B~~
- ~~PHP C~~
- ~~PHP D~~
- ~~PHP E~~

2b County of Residence

Perry lives in Swain County, which is one of five counties where the EBCI Tribal Option network is available.

- EBCI Tribal Option ✓
- ~~Medicaid Direct~~
- ~~PHP A~~
- ~~PHP B~~
- ~~PHP C~~
- ~~PHP D~~
- ~~PHP E~~

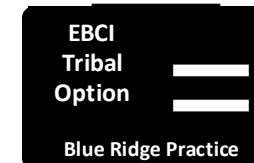
2c Primary Care Physician

Perry does not have a PCP. She is enrolled to EBCI Tribal Option.

- EBCI Tribal Option ✓
- ~~Medicaid Direct~~
- ~~PHP A~~
- ~~PHP B~~
- ~~PHP C~~
- ~~PHP D~~
- ~~PHP E~~

😊 Perry's Enrolled!

Perry is enrolled in EBCI Tribal Option, and she is auto-assigned to CIHA as her PCP. Her enrollment and PCP information is transmitted to the EBCI Tribal Option. Perry will receive her Welcome Packet and new Medicaid ID Card.





Scenario 7: Tribe/IHS Individual Beneficiary Auto-Enrolled

Emma Redmond is a federally recognized Tribal member who is exempt from Standard Plan. She lives in Region 1 and has Maple Health as her PCP. While Emma received a letter communicating her options to enroll in EBCI Tribal Option, NC Medicaid Direct or a Prepaid Health Plan, she did not select a health plan prior to the end of Open Enrollment. The Department enrolls Emma to EBCI Tribal Option using the auto-enrollment process. Rules in *italics* apply.

1 Geography

Emma lives in Region 1. All health plans except PHP C are available in Region 1.

- EBCI Tribal Option ✓
- Medicaid Direct ✓
- PHP A ✓
- PHP B ✓
- ~~PHP C~~
- PHP D ✓
- PHP E ✓

2 Special Population

Emma is a federally recognized Tribal member and did not select a PHP during Open Enrollment. All PHPs are removed. EBCI Tribal Option and NC Medicaid Direct are options.

- EBCI Tribal Option ✓
- Medicaid Direct ✓
- ~~PHP A~~
- ~~PHP B~~
- ~~PHP C~~
- ~~PHP D~~
- ~~PHP E~~

2b County of Residence

Emma lives in Clay County, which is not one of five counties where the EBCI Tribal Option network auto-enrollment is performed.

- ~~EBCI Tribal Option~~
- Medicaid Direct ✓
- ~~PHP A~~
- ~~PHP B~~
- ~~PHP C~~
- ~~PHP D~~
- ~~PHP E~~

😊 Emma's Enrolled!

Emma continues her enrollment in Medicaid Direct and will continue to get services the way she does today. She will receive a confirmation notice that there is no change to her health plan.

